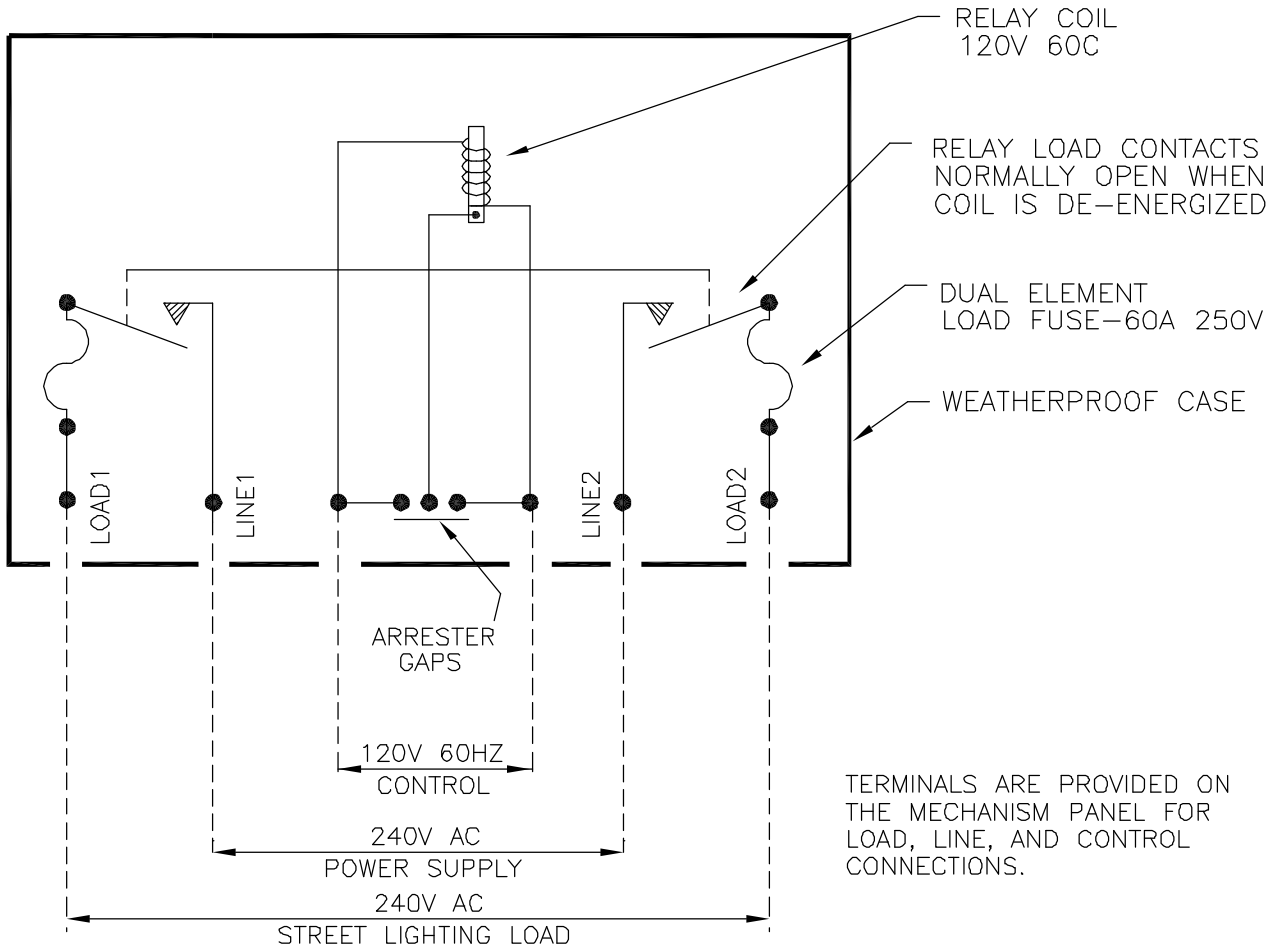


THE TYPE MR-UD DESIGNATION IDENTIFIES THE 2 POLE RELAY RATED 60 AMPERES 240 VOLTS AC WITH THE LOAD CONTACTS NORMALLY OPEN WHEN THE 120 VOLT 60 CYCLE COIL IS DE-ENERGIZED WITH CONTROL CIRCUIT ARRESTER AND LOAD CIRCUIT FUSES IN WEATHERPROOF CASE.



1. THE CONTROL CIRCUIT RATING IS SHOWN ON THE NAMEPLATE.
2. THE TYPE MR RELAY LOAD CONTACTS ARE NORMALLY OPEN WHEN THE OPERATING COIL IS DE-ENERGIZED. THE CONTROL CIRCUIT IS ENERGIZED TO CLOSE THE TYPE MR RELAY LOAD CONTACTS.
3. SINCE STREET LIGHTING LOADS ARE CONTINUOUSLY ENERGIZED FOR LONG PERIODS THE CONNECTED LOAD SHOULD NOT EXCEED 80% OF THE FUSE RATING. THE LOAD FOR INSTALLATIONS WHICH USE BALLASTS, TRANSFORMERS, OR REACTORS SHOULD BE BASED ON THE TOTAL AMPERE RATING OF THE UNIT AND NOT ON THE WATTAGE OF THE LAMPS.

MAYSTEEL LLC CLAIMS PROPRIETARY RIGHTS IN THE INFORMATION DISCLOSED HEREON. THIS DRAWING IS FURNISHED IN CONFIDENCE ON THE EXPRESS UNDERSTANDING THAT IT OR ANY REPRODUCTION THEREOF WILL BE USED SOLELY FOR THE MANUFACTURE OR PROCUREMENT OF PARTS TO BE FURNISHED TO MAYSTEEL LLC.

**Maysteel**  
Electric Utility  
Products & Enclosures

TITLE  
CONNECTIONS FOR TYPE MR-UD 2P RELAY RATED  
60 A 250V 60C

**A**

A	CN 31126300 "A"	3-27-95	DRAWN	APPROVED	SCALE	DWG NO
REV LTR	DESCRIPTION	DATE	3-27-95 GMM	5-12-97 JRF	--	31126300