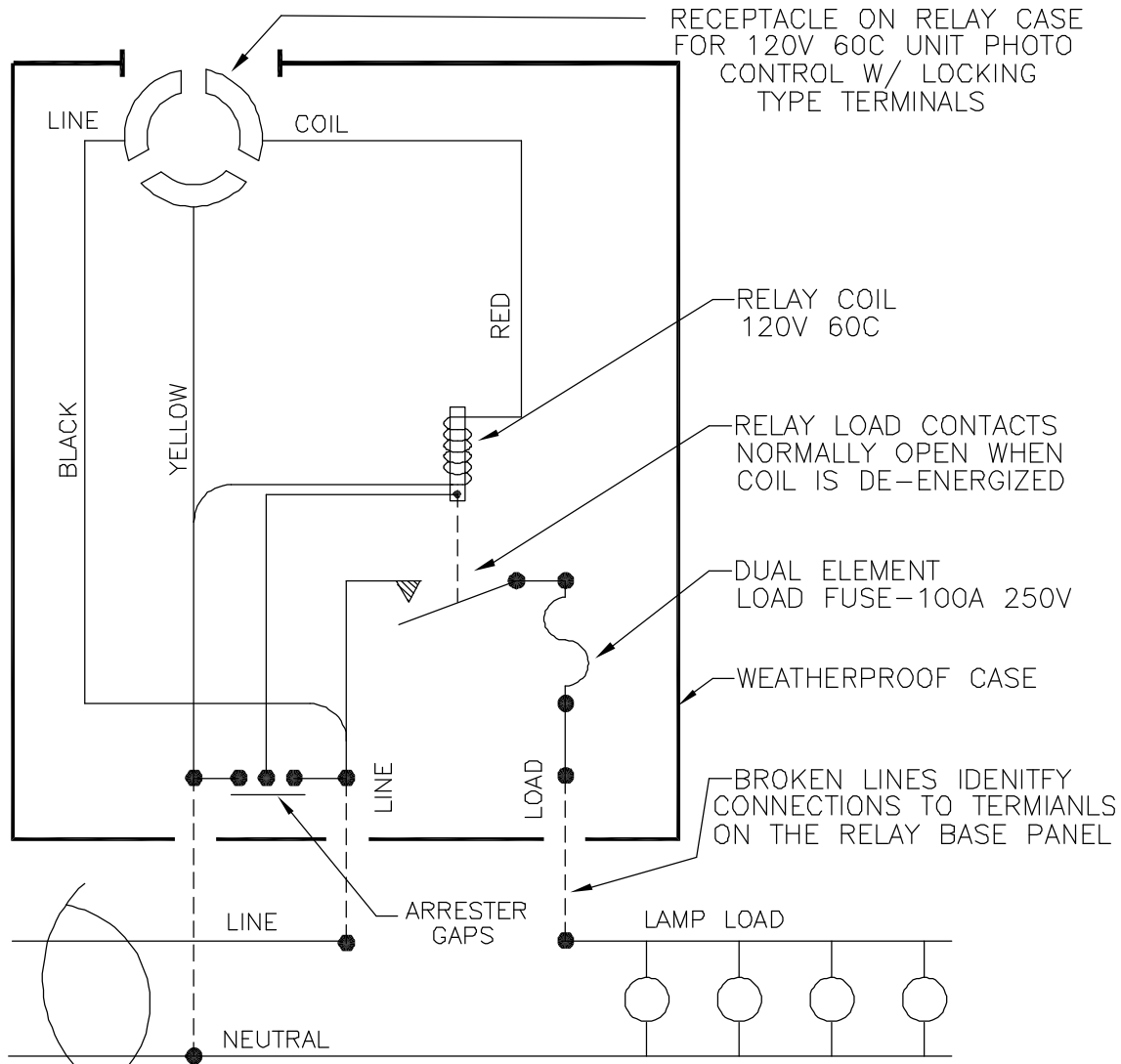


1. THE RECEPTACLE IS ADJUSTABLE FOR NORTH ORIENTATION IN ACCORDANCE WITH THE REQUIREMENTS OF EEC-STANDARD NO. TDJ-148.
2. THE PHOTO-CONTROL SHOULD OPERATE TO ENERGIZE THE RELAY COIL DURING THE ON SCHEDULE FOR THE STREET LIGHTING CIRCUIT.
3. SINCE STREET LIGHTING LOADS ARE CONTINUOUSLY ENERGIZED FOR LONG PERIODS, THE CONNECTED LOAD SHOULD NOT EXCEED 80% OF THE FUSE RATING. THE LOAD CALCULATIONS SHOULD BE BASED ON THE TOTAL AMPERE RATING OF THE BALLASTS, TRANSFORMERS, OR REACTORS AND NOT ON THE WATTAGE OF THE LAMPS.



MAYSTEEL LLC CLAIMS PROPRIETARY RIGHTS IN THE INFORMATION DISCLOSED HEREON. THIS DRAWING IS FURNISHED IN CONFIDENCE ON THE EXPRESS UNDERSTANDING THAT IT OR ANY REPRODUCTION THEREOF WILL BE USED SOLELY FOR THE MANUFACTURE OR PROCUREMENT OF PARTS TO BE FURNISHED TO MAYSTEEL LLC.

Maysteel
Electric Utility
Products & Enclosures

TITLE
CONNECTIONS FOR TYPE MR-FG 1P RELAY RATED
100 A 120V 60C W/ PHOTO CONTROL RECEPTACLE

A

REV	LTR	DESCRIPTION	DATE	DRAWN	APPROVED	SCALE	DWG NO
				2-23-95 GMM	8-13-97 JRF	--	31133200