

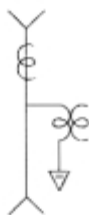
# Pad Mount Deadfront Primary Metering Gear



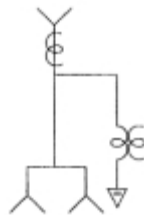
**Primary metering gear** provides a safe, convenient means to meter primary voltages from 15-35kV. Single- or three-phase units are supplied completely assembled and wired, ready for installation. Available in loop or radial feed with 200A (standard) or 600A (optional) bushings.

## One Line Diagrams

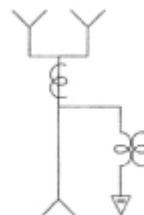
Radial Feed



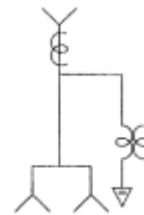
Radial Feed 2 Taps



Loop Feed



Loop Feed 2 Taps



# Enclosure Features

Grounding provisions.

Meets all current ANSI standards.

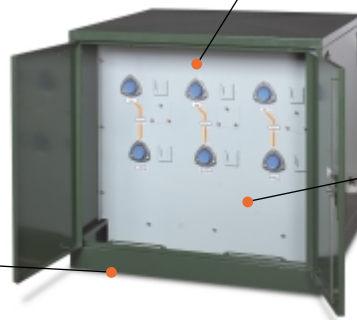
All manufacturers' outdoor PTs and CTs, can be supplied via use of universal mountings.



Penta-head bolt and three-point latch on both live and dead-front sides for greater security.

Phase isolated design with white electrical grade fiberglass barriers for ease of operation.

Open bottom design with "C" channel and two-inch lip.



Powder finish exceeds ANSI C57.12.28 requirements; Munsell green (7GY 3.29/1.5) to blend with surroundings.

Stainless steel hinges and hardware for long operational life.

Mimic bus on dead-front side and on individual lift-out rear barriers on metering transformer side.

Recessed lifting lugs.

Light gray metal dead-front barrier provides maximum contrast with black elbows.

## Pad Mount Primary Metering Enclosures

### OPTIONS:

- 600A bushings
- Meter installed
- PTs and CTs installed
- Load break switches and fuses available

[www.maysteel.com](http://www.maysteel.com)